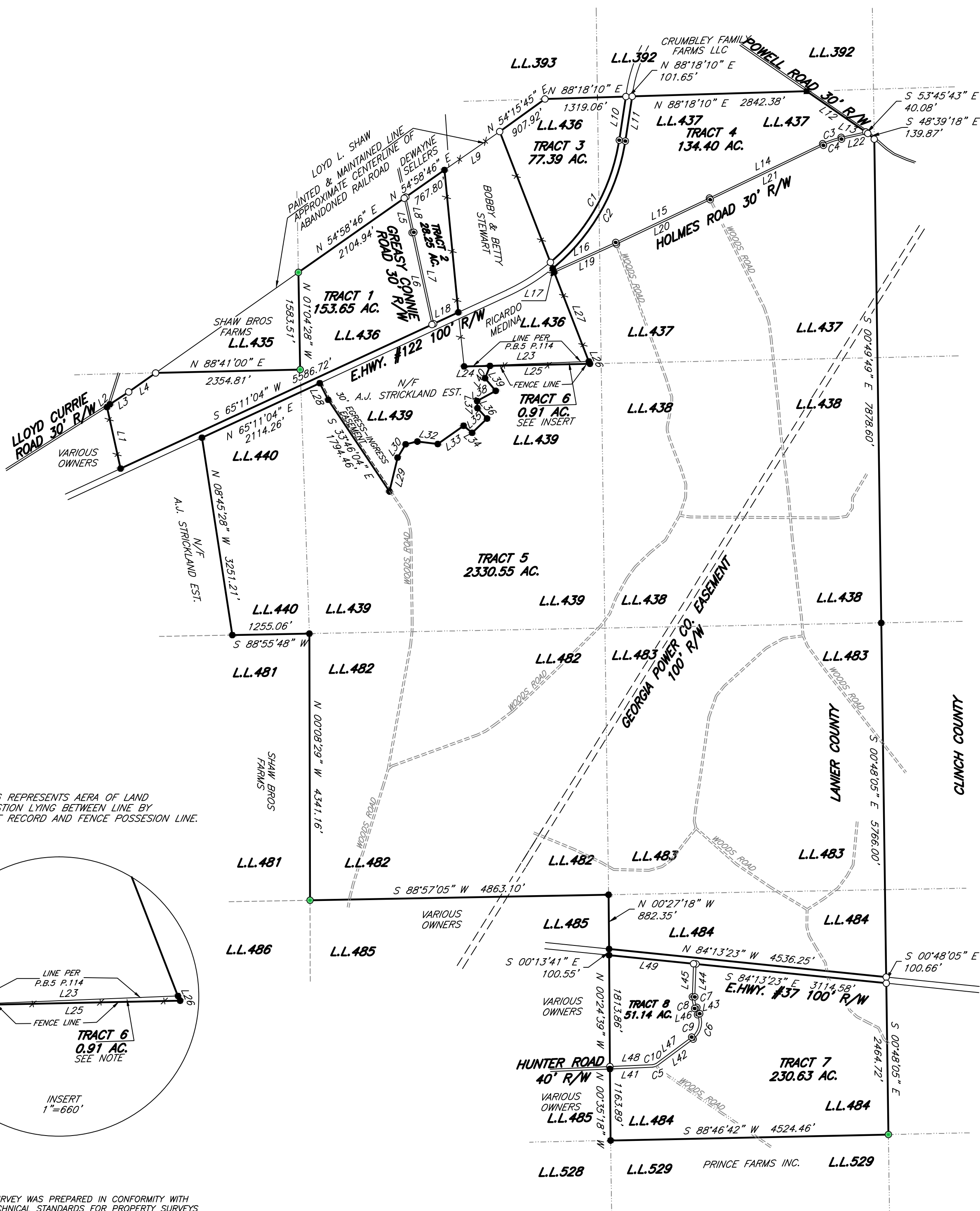
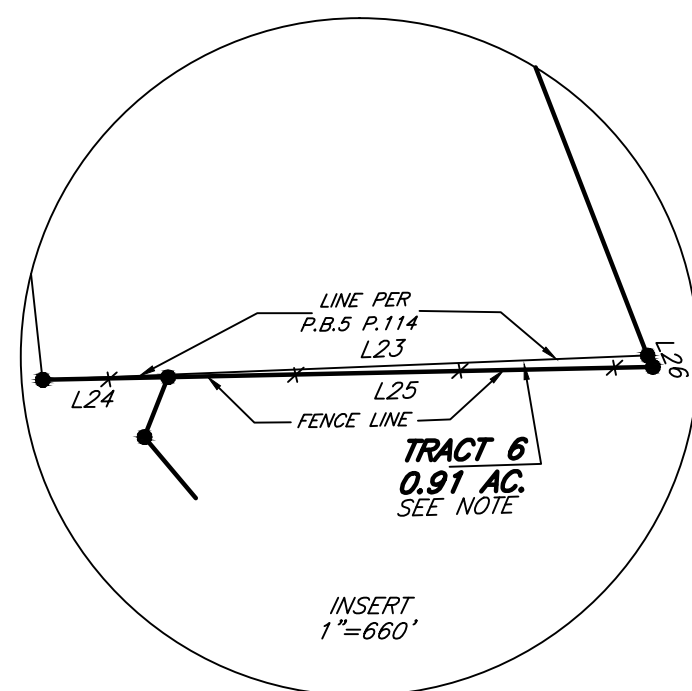


SURVEY FOR:
OLIN WOOTEN
LOCATED IN LAND LOTS AS SHOWN, 10TH LAND DISTRICT
LANIER COUNTY, GEORGIA
SCALE: 1"=1320'
DATE: 05/17/16



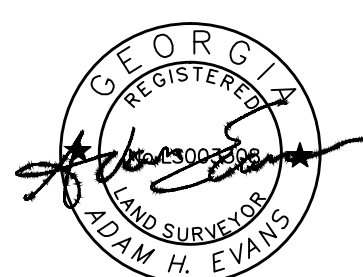
LINE	BEARING	DISTANCE
L1	N 12°25'55" W	1024.93'
L2	N 45°13'25" E	65.49'
L3	N 56°37'54" E	366.96'
L4	N 54°54'06" E	536.04'
L5	N 12°46'50" W	575.81'
L6	S 12°13'48" E	1530.84'
L7	N 12°13'48" W	1524.28'
L8	N 12°46'50" W	588.23'
L9	N 55°08'13" E	1095.97'
L10	S 08°39'08" W	718.21'
L11	N 08°39'08" E	736.47'
L12	S 55°26'34" E	1170.31'
L13	S 77°46'09" W	410.66'
L14	S 64°21'22" W	2044.81'
L15	S 64°38'49" W	1689.06'
L16	S 65°36'26" W	1110.92'
L17	N 21°13'12" W	38.59'
L18	S 65°11'04" W	442.48'
L19	N 65°36'26" E	1112.84'
L20	N 64°38'49" E	1689.39'
L21	N 64°21'22" E	2044.88'
L22	N 77°46'09" E	437.23'
L23	S 87°41'35" W	2032.13'
L24	N 88°46'45" E	420.67'
L25	N 88°46'45" E	1628.03'
L26	N 24°57'39" W	42.08'
L27	N 21°13'12" W	1556.15'
L28	S 26°59'55" E	303.04'
L29	N 13°27'26" E	566.80'
L30	N 31°18'23" E	252.72'
L31	N 76°45'28" E	196.53'
L32	S 83°07'19" E	334.48'
L33	N 54°46'06" E	515.44'
L34	S 50°24'05" E	180.08'
L35	N 46°10'35" E	336.08'
L36	N 42°50'44" W	229.88'
L37	N 02°45'10" W	116.33'
L38	N 61°18'23" E	345.67'
L39	N 40°05'20" W	267.76'
L40	N 21°28'00" E	215.80'
L41	N 87°31'30" W	701.52'
L42	N 53°25'52" E	723.21'
L43	N 24°28'05" W	111.45'
L44	N 02°05'02" E	537.01'
L45	S 02°04'59" W	539.60'
L46	S 24°28'05" E	111.45'
L47	S 53°25'52" W	723.21'
L48	S 87°31'30" W	700.09'
L49	S 84°13'23" E	1382.60'

NOTE:
TRACT 6 REPRESENTS AREA OF LAND
IN QUESTION LYING BETWEEN LINE BY
PLAT OF RECORD AND FENCE POSSESSION LINE.



THIS SURVEY WAS PREPARED IN CONFORMITY WITH
THE TECHNICAL STANDARDS FOR PROPERTY SURVEYS
IN GEORGIA AS SET FORTH IN CHAPTER 180-7 OF THE
RULES OF THE GEORGIA BOARD OF REGISTRATION FOR
PROFESSIONAL ENGINEERS AND LAND SURVEYORS AND
AS SET FORTH IN THE GEORGIA PLAT ACT O.C.G.A.
15-6-67.

I CERTIFY THAT IN MY OPINION THE PROVISIONS IN O.C.G.A.
SECTION 15-6-67(d) DOES NOT REQUIRE APPROVAL
OF THIS PLAT BY THE PLANNING COMMISSION.



- LEGEND:
- 1/2 PIPE SET
 - IRON PIN FOUND
 - ▲ FENCE TURN-CORNER
 - ⊙ CALCULATED POSITION (NO CORNER SET)
 - CONCRETE MARKER FOUND
 - CHAIN LINK FENCE
 - THREE RING PAINTED PINE

CURVE	RADIUS	ARC LENGTH	CHORD LENGTH	CHORD BEARING	DELTA ANGLE
C1	3222.04'	2334.81'	2284.06'	S 29°24'42" W	41°31'07"
C2	3322.04'	2441.12'	2386.56'	N 29°42'12" E	42°06'08"
C3	1365.00'	319.55'	318.82'	S 71°03'46" W	13°24'48"
C4	1335.00'	312.53'	311.82'	N 71°03'46" E	13°24'48"
C5	134.02'	79.75'	78.58'	N 70°28'41" E	34°05'38"
C6	340.00'	462.26'	427.47'	N 14°28'53" E	77°53'57"
C7	380.00'	176.10'	174.53'	N 11°11'32" W	26°33'07"
C8	420.00'	194.63'	192.89'	S 11°11'33" E	26°33'04"
C9	300.00'	407.88'	377.18'	S 14°28'53" W	77°53'57"
C10	94.02'	55.95'	55.12'	S 70°28'41" W	34°05'38"

ERROR OF CLOSURE: GREATER THAN 1' IN 10,000
ANGULAR ERROR: LESS THAN 6" PER ANGLE
ADJUSTED CLOSURE: 1" = 100,000'
COMPASS RULE ADJUSTMENT
FIELD SURVEYOR: ADAM EVANS
EQUIP. USED: TOPCON GTS 3B TOTAL STATION-TRIMBLE R8 GPS
PLAT BY: LARRY EVANS
COMP. FILE: OWOOTEN-LANIER