

1" = 200' SCALE

**SURVEY FOR:  
OLIN WOOTEN**  
LOCATED IN LAND LOT 449, 2ND LAND DISTRICT  
JEFF DAVIS COUNTY, GEORGIA  
SCALE: 1"=200'  
DATE: 10/26/16

FILED IN OFFICE  
CLERK SUPERIOR COURT  
JEFF DAVIS COUNTY, GA.  
2016 DEC -9 PM 12:39  
JULIE WILKINSON, CLERK

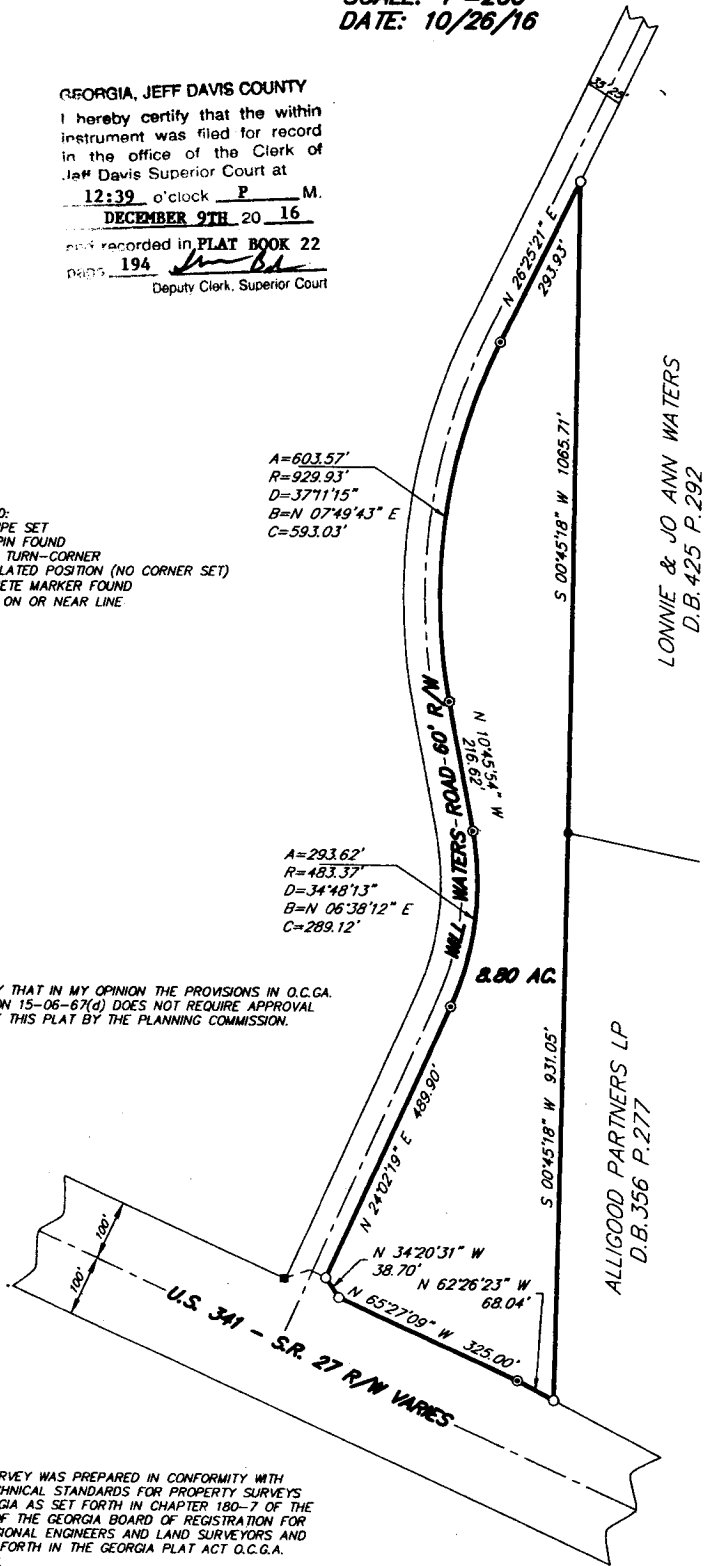
GEORGIA, JEFF DAVIS COUNTY  
I hereby certify that the within instrument was filed for record in the office of the Clerk of Jeff Davis Superior Court at 12:39 o'clock P M. DECEMBER 9TH 20 16 and recorded in PLAT BOOK 22 PAGE 194  
Deputy Clerk, Superior Court

- LEGEND:  
○ 1/2 PIPE SET  
● IRON PIN FOUND  
▲ FENCE TURN-CORNER  
⊙ CALCULATED POSITION (NO CORNER SET)  
■ CONCRETE MARKER FOUND  
-#- FENCE ON OR NEAR LINE

A=603.57'  
R=929.93'  
D=371°15"  
B=N 07°49'43" E  
C=593.03'

A=293.62'  
R=483.37'  
D=34°48'13"  
B=N 06°38'12" E  
C=289.12'

I CERTIFY THAT IN MY OPINION THE PROVISIONS IN O.C.G.A. SECTION 15-08-67(d) DOES NOT REQUIRE APPROVAL OF THIS PLAT BY THE PLANNING COMMISSION.



THIS SURVEY WAS PREPARED IN CONFORMITY WITH THE TECHNICAL STANDARDS FOR PROPERTY SURVEYS IN GEORGIA AS SET FORTH IN CHAPTER 180-7 OF THE RULES OF THE GEORGIA BOARD OF REGISTRATION FOR PROFESSIONAL ENGINEERS AND LAND SURVEYORS AND AS SET FORTH IN THE GEORGIA PLAT ACT O.C.G.A. 15-6-67.

ANGULAR ERROR: LESS THAN 6" PER ANGLE  
ADJUSTED CLOSURE: 1" = 100,000'  
COMPASS RULE ADJUSTMENT  
FIELD SURVEYOR: ADAM EVANS  
EQUIP. USED: TOPCON GTS 3B TOTAL STATION-TRIMBLE R8 GPS  
PLAT BY: LARRY EVANS  
COMP. FILE: OWOOTEN-16-12

STATEWIDE SURVEYING COMPANY  
521 ETHEL STREET  
DOUGLAS, GEORGIA 31533  
912-384-7723