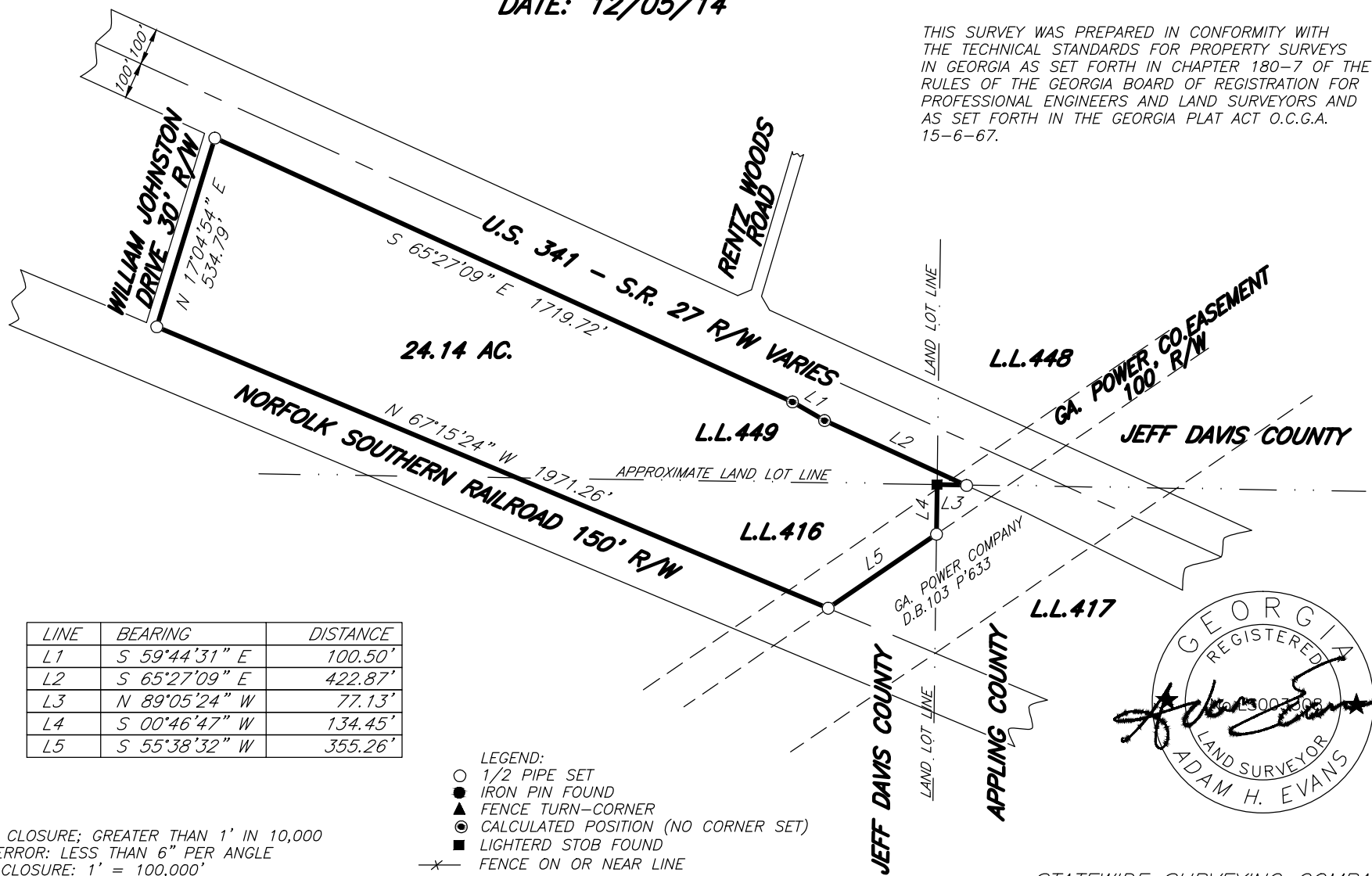


SURVEY FOR:
OLIN WOOTEN
LAND LOTS 416 448 & 449, 2ND LAND DISTRICT
JEFF DAVIS COUNTY, GEORGIA
SCALE: 1"=400'
DATE: 12/05/14



THIS SURVEY WAS PREPARED IN CONFORMITY WITH THE TECHNICAL STANDARDS FOR PROPERTY SURVEYS IN GEORGIA AS SET FORTH IN CHAPTER 180-7 OF THE RULES OF THE GEORGIA BOARD OF REGISTRATION FOR PROFESSIONAL ENGINEERS AND LAND SURVEYORS AND AS SET FORTH IN THE GEORGIA PLAT ACT O.C.G.A. 15-6-67.



LINE	BEARING	DISTANCE
L1	S 59°44'31" E	100.50'
L2	S 65°27'09" E	422.87'
L3	N 89°05'24" W	77.13'
L4	S 00°46'47" W	134.45'
L5	S 55°38'32" W	355.26'

- LEGEND:
- 1/2 PIPE SET
 - IRON PIN FOUND
 - ▲ FENCE TURN-CORNER
 - ⊙ CALCULATED POSITION (NO CORNER SET)
 - LIGHTERD STOB FOUND
 - *— FENCE ON OR NEAR LINE

ERROR OF CLOSURE; GREATER THAN 1' IN 10,000
 ANGULAR ERROR: LESS THAN 6" PER ANGLE
 ADJUSTED CLOSURE: 1' = 100,000'
 COMPASS RULE ADJUSTMENT
 FIELD SURVEYOR: ADAM EVANS
 EQUIP. USED: TOPCON GTS 3B TOTAL STATION-TRIMBLE R8 GPS
 PLAT BY: LARRY EVANS
 COMP. FILE: OWOOTEN-16-11

I CERTIFY THAT IN MY OPINION THE PROVISIONS IN O.C.G.A. SECTION 15-06-67(d) DOES NOT REQUIRE APPROVAL OF THIS PLAT BY THE PLANNING COMMISSION.



STATEWIDE SURVEYING COMPANY
 521 ETHEL STREET
 DOUGLAS, GEORGIA 31533
 912-384-7723