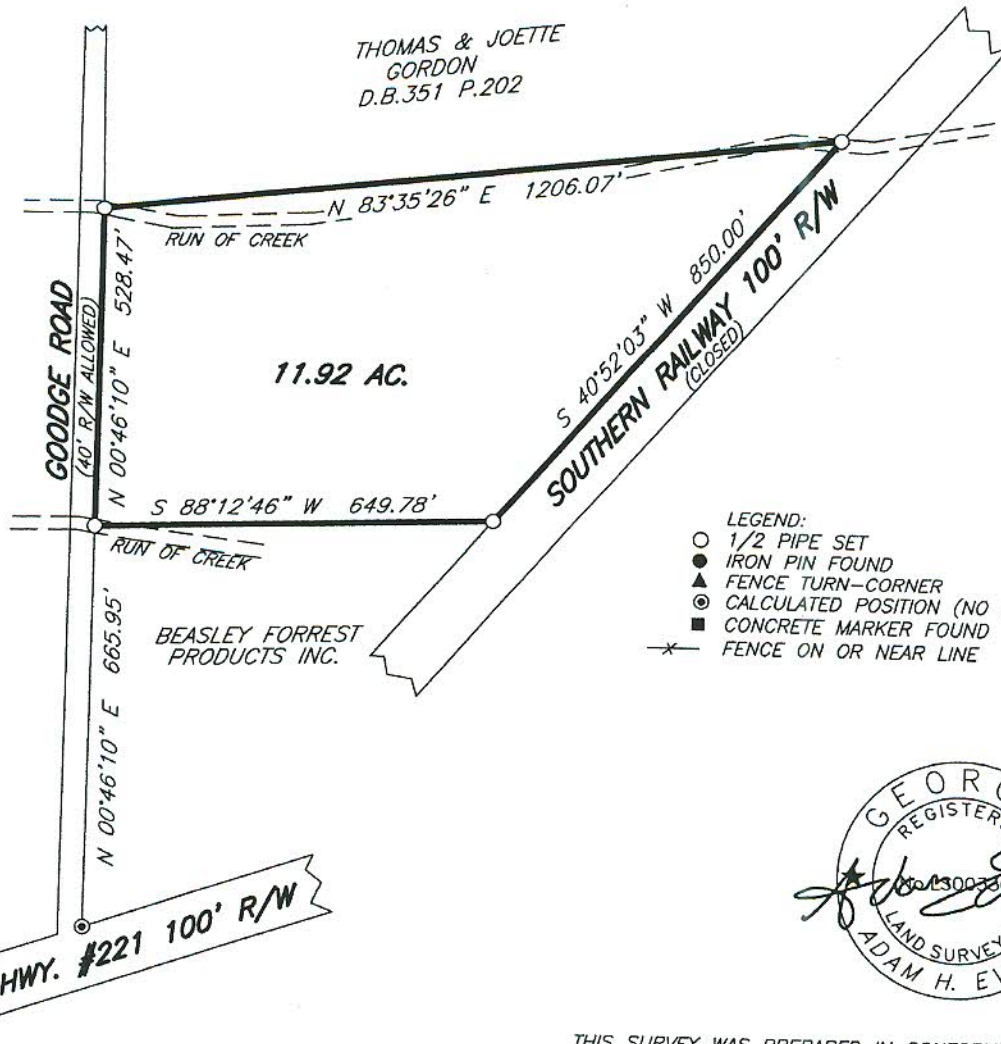




SURVEY FOR:
OLIN WOOTEN
 LOCATED IN LAND LOT 558, 2ND LAND DISTRICT
 JEFF DAVIS COUNTY, GEORGIA
 SCALE: 1"=300'
 DATE: 12/16/16



- LEGEND:
- 1/2 PIPE SET
 - IRON PIN FOUND
 - ▲ FENCE TURN-CORNER
 - ⊙ CALCULATED POSITION (NO CORNER SET)
 - CONCRETE MARKER FOUND
 - *— FENCE ON OR NEAR LINE



I CERTIFY THAT IN MY OPINION THE PROVISIONS IN O.C.G.A. SECTION 15-06-67(d) DOES NOT REQUIRE APPROVAL OF THIS PLAT BY THE PLANNING COMMISSION.

THIS SURVEY WAS PREPARED IN CONFORMITY WITH THE TECHNICAL STANDARDS FOR PROPERTY SURVEYS IN GEORGIA AS SET FORTH IN CHAPTER 180-7 OF THE RULES OF THE GEORGIA BOARD OF REGISTRATION FOR PROFESSIONAL ENGINEERS AND LAND SURVEYORS AND AS SET FORTH IN THE GEORGIA PLAT ACT O.C.G.A. 15-6-67.

ERROR OF CLOSURE: GREATER THAN 1' IN 10,000
 ANGULAR ERROR: LESS THAN 6" PER ANGLE
 ADJUSTED CLOSURE: 1' = 100,000'
 COMPASS RULE ADJUSTMENT
 FIELD SURVEYOR: ADAM EVANS
 EQUIP. USED: TOPCON GTS 3B TOTAL STATION-TRIMBLE R8 GPS
 PLAT BY: LARRY EVANS
 COMP. FILE: OWOOTEN-16-9

STATEWIDE SURVEYING COMPANY
 521 ETHEL STREET
 DOUGLAS, GEORGIA 31533
 912-384-7723